

WHERE TRADITION MEETS INNOVATION




Victoria
British Columbia
Canada 🍁



Royal Roads
UNIVERSITY

LIFE.CHANGING

A large world map is mounted on a wall, constructed from numerous small, light-colored wooden blocks. The landmasses are represented by the natural wood color, while the oceans are filled with blue blocks. The map is centered on the Atlantic Ocean, showing North and South America on the left and Europe and Africa on the right. In the foreground, two young men are sitting on a dark surface, facing each other in conversation. The man on the left is wearing a red hoodie and glasses, while the man on the right is wearing a white hoodie and glasses. The overall scene suggests a modern, educational environment.

**ROYAL ROADS TAKES YOU
WHERE YOU WANT TO GO.
WHETHER IT'S ACROSS
THE CAMPUS OR AROUND
THE WORLD.**



TABLE OF CONTENTS

03 ROYAL ROADS UNIVERSITY

04 VICTORIA, BRITISH COLUMBIA, CANADA

06 LEARNING, TEACHING AND RESEARCH MODEL

07 EDUCATION ABROAD OPPORTUNITIES

Student Exchange

Visiting Student Program

Visiting Scholars

International Internship

08 AREAS OF STUDY

School of Business

School of Communication & Culture

School of Environment & Sustainability

School of Education & Technology

School of Humanitarian Studies

College of Interdisciplinary Studies

School of Leadership Studies

School of Tourism & Hospitality Management

Professional & Continuing Studies

16 INTERNATIONAL COLLABORATIVE PARTNERSHIPS



THE PATH TO SUCCESS BEGINS WITH ROYAL ROADS.

Royal Roads is a unique Canadian public research university that specializes in leading-edge applied and professional programs. We pride ourselves on approaching things a little differently because we recognize every student is different.

- **Flexible education, flexible admissions:** Degrees are offered on campus, online and in a blended format, designed for mature working professionals or young aspiring leaders.
- **Breathtaking location:** Located in one of Canada's most beautiful National Historic Sites with over 565 acres of hiking trails, gardens, waterfront, and even a castle.
- **Applied and relevant programs:** Faculty have global industry experience and our programs have direct applicability, appealing to students interested in acquiring new knowledge and skills while remaining current.
- **Small class size:** The average class size at RRU is 35, which allows students greater access to their instructors and a supportive student community.

4,800+
Enrolled students

27,300+
Alumni from over 60 countries

35
Average class size

750+
International students

80+
Active global partnerships

HOW THE RRU PATH MAKES A DIFFERENCE.

DEGREE COMPLETION

Students who have completed 2 years of post-secondary education (60 credits overall, 24 2nd year credits) can apply to complete their undergraduate degree in 2 years or 12 months.

ACCELERATED DEGREE

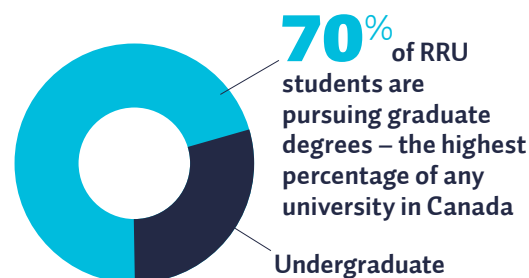
Students with strong academic and English language capabilities can complete the last 2 years of their undergraduate degree in 12 months in select programs.

FLEXIBLE ADMISSION

Applicants lacking formal academic education can be evaluated based on a combination of formal education, informal learning, work experience and real-world life experiences.

UNIVERSITY TRANSFER PARTNERS

Students who have completed a diploma with one of RRU's 60+ university transfer partners can finish their undergraduate degree at RRU in 2 years or 12 months.



PROGRAM AREAS

Business
Tourism and Hospitality
Communication and Culture
Education and Technology
Environment and Sustainability
Humanitarian Studies
Interdisciplinary Studies
Leadership Studies
Professional and Continuing Studies

SERVICES

Academic support
Career and internship assistance
Health and wellness
Awards and scholarships
Housing and homestay
Student associations, clubs and activities
Food services
Computer services
Accessibility services
Library
Writing Centre

DESIGNATIONS AND ACCREDITATIONS

- Member of the Ashoka Changemaker Campus Network, a dynamic, global community of universities committed to advancing social innovation and changemaking across their institution and beyond.
- Universities Canada: A unified voice for higher education, research and innovation, committed to advancing the mission of 96 member institutions to transform lives, strengthen communities and find solutions to the most pressing issues facing our world.
- Education Quality Assurance (EQA) designation: Meets or exceeds quality assurance standards set by the province of B.C.



**Universities
Canada.**

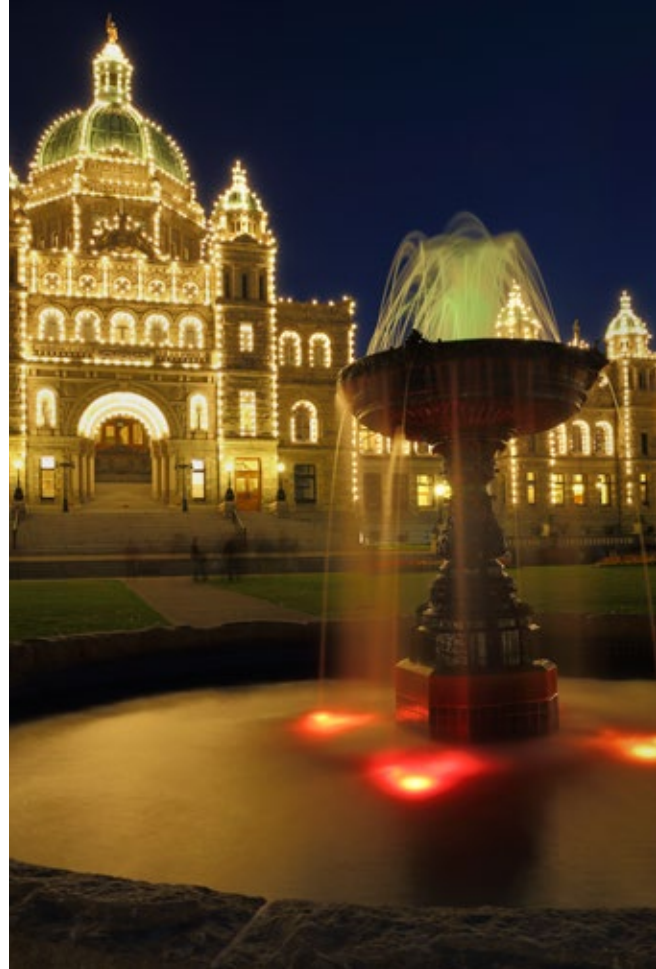
VICTORIA

British Columbia, Canada

A beautiful place to live and learn.

Canada is an international education destination well-known for its warm, welcoming and multicultural society, and British Columbia boasts natural beauty, a mild coastal climate, and outdoor recreation opportunities like no other place on Earth. So you could say RRU feeds the soul just as much as it does the mind.

- Victoria, the capital city of British Columbia, is a vibrant city, full of attractions and year-round music and art festivals.
- Victoria has more restaurants per capita than any other city in Canada – and second only to San Francisco in North America.
- Victoria was voted 7th Best City in the World by Condé Nast Traveler Readers' Choice Awards 2016, and 2nd Best Small City in the World, outside USA by Conde Nast 2017



**POPULATION OF CANADA**

37 million

POPULATION OF VANCOUVER ISLAND

750,000

POPULATION OF GREATER VICTORIA

367,700

**CLOSEST LARGE CITIES**

- Vancouver (2.4 million)
- Seattle (3.8 million)

**TOP 3 INDUSTRIES IN VICTORIA**

- Advanced Technology
- Tourism/Hospitality
- Education

**MILDEST CLIMATE IN CANADA**

6°C (winter) / 25°C (summer)

BRITISH COLUMBIA

VANCOUVER

CANADA
USA

VICTORIA

Capital City of British Columbia

SEATTLE

WASHINGTON

LEARNING, TEACHING AND RESEARCH MODEL

At RRU, we know that being effective in the world means being prepared. So Royal Roads University provides learning experiences that mirror the kinds of complex learning, performance and leadership challenges found in today’s organizations, communities and educational institutions.

MEETS LABOUR MARKET DEMAND

RRU’s mandate is to respond to the emerging needs of a changing world and workforce, and to deliver programs designed specifically for aspiring and experienced professionals who want to advance their careers.

COHORT LEARNING

Groups of 20-50 students work together as a cohort for the duration of the program, frequently forming a lifelong professional community.

WORKPLACE ORIENTED

Team-based learning enhances skills related to collaboration, team facilitation, project management and conflict management – skills that have direct application in the workplace.

GLOBAL MINDSET

Graduates are curious about life beyond their borders, willing to take risks, focused on finding workable solutions and determined to make a difference.

BLENDED LEARNING

Blended learning is a combination of online learning and short residency periods. Residencies take place on campus but can also take place in another country. So learning with RRU is learning that works around you.

- Team-based, high-touch social online learning combined with short on-campus residencies allows working professionals to maintain their lives while advancing their education.
- Residencies are carefully designed periods of intense academic study structured to optimize face-to-face access to instructors and develop networks with fellow students.
- Distance courses are delivered entirely online through innovative, easy-to-use technologies and consist of both individual assignments and group projects.
- Blended programs include 1, 2 or 3 mandatory on-campus residencies ranging from 1-3 weeks each.
- A study permit is required for blended programs.

CORE COMPONENTS OF THE RRU LEARNING MODEL

Most programs at RRU share a number of fundamental curriculum design elements, learning processes and support services that work together to support authentic, relevant and meaningful student learning. These curriculum design elements and learning processes make up our Core Components.

| | |
|----------------------------|--|
| OUTCOME-BASED | Learning outcomes are used to make the purpose of programs and courses clear |
| TECHNOLOGY-ENHANCED | Combination of face-to-face and online strategies aid in accessibility and participation |
| EXPERIENTIAL AND AUTHENTIC | Strategies employed to provide practical relevance |
| LEARNING COMMUNITY | Students stay together to support each other through a whole program |
| TEAM-BASED | Up to 50% of course assignments are team-based |
| INTEGRATIVE | Subject matter from a variety of disciplines enables complex problem solving |
| APPLIED | Faculty are scholars and practitioners |
| ENGAGED LEARNING | Learning techniques that require active participation of students are employed |
| ACTION RESEARCH | Students engage in practical and participative research |
| SUPPORTIVE | Academic and student services are integrated to support engagement and success |
| FLEXIBLE | Strategies are put in place to enable access and recognize the value of relevant workplace and life experience |

INTERNATIONAL MOBILITY OPPORTUNITIES

Our Office of International Collaboration and Development works with institutional partners to provide international opportunities for all students at RRU. The opportunity to live, study or work abroad broadens the learning experience, promotes scholarly exchange and a global mindset, and fosters the skills that employers are looking for in today's global workplace.

Student mobility opportunities range from a choice of international summer programs, internships, or research, to a semester or full academic year abroad in an exchange program.

VISITING STUDENT PROGRAM

This program features a flexible, short-term university experience ranging from one course, a semester, or full academic year without the reciprocity of an exchange program.

- Courses offered on-campus or online for undergraduate or master's students.
- Students pay and earn credit towards their degree.
- Visiting Student Program Award is available to students in undergraduate courses.

VISITING SCHOLARS

A comprehensive program will be tailor-made to accommodate the teaching or research interests of the visitor, combined with destination assistance for accommodation and field trips.

INTERNATIONAL INTERNSHIP

The Office of International Collaboration and Development works in partnership with the Career Learning and Development office to source international internship opportunities through partner institutions.



STUDENT EXCHANGE PARTNERS

AUSTRALIA

- 🌐 Western Sydney University

AUSTRIA

- 🌐 IMC University of Applied Sciences Krems
- 🌐 Management Center Innsbruck
- 🌐 Salzburg University of Applied Sciences

BELGIUM

- 🌐 Artevelde University College

CHILE

- 🌐 DUOC UC Universidad de los Andes

GERMANY

- 🌐 Berlin School of Economics and Law
- 🌐 Munich University of Applied Sciences

INDIA

- 🌐 Chandigarh University

ITALY

- 🌐 International University of Language and Media (IULM)

JAPAN

- 🌐 Kanagawa University
- ✈️ Shujitsu University
- 🌐 Seinan Gakuin University

MEXICO

- 🌐 Jesuit University of Guadalajara (ITESO)

NORWAY

- 🌐 Western Norway University of Applied Sciences

SOUTH KOREA

- 🌐 Kookmin University
- ✈️ 🌐 Kyung Hee University
- 🌐 Sookmyung Women's University
- ✈️ 🌐 University of Seoul

SPAIN

- 🌐 Universitat Pompeu Fabra (UPF)

SWEDEN

- 🌐 Lund University

VIETNAM

- 🌐 National Economics University

🌐 **Semester Abroad:** 1 or 2 semesters at an international exchange partner

✈️ **Summer Program:** summer break studying with an international exchange partner

SCHOOL OF BUSINESS

With undergraduate degrees to create a strong foundation for your career path and graduate programs to establish you as a global thought leader, Royal Roads University's School of Business programs offer relevant, real-world education for today's complex business environment.

- Practical projects are at the forefront of RRU's MBA program. Students participating in the Organizational Management project examine a management problem for a real-life client, conducting academic research, analyzing options and providing recommendations and a high-level implementation plan. MBA Students can also choose International Business specializations with opportunities to attend residencies in Asia or Europe. There's also the opportunity for a dual master's degree in 24-months, earning both a Master of Global Management at RRU and an MBA at the Management Centre Innsbruck in Austria.
- The Master of Global Management program provides students with four completion options that emphasize experiential learning: Global Management Project, Internship



Research Project Option, Graduate Certificate specialization options, or the MGM + MBA International Business Dual Degree.

- The BCom in Entrepreneurial Management program offers an entrepreneurial approach to solving business challenges, whether in a new venture of your own or within organizations of any size and type.
- Offered as a four-year program to international students, or a two-year degree completion program, RRU's BBA in Business and Sustainability shapes students to use business, civic engagement and personal action to change the world for an environmentally and socially better future.

PROGRAMS

- Doctor of Business Administration
- Master of Business Administration in Executive Management
- Master of Global Management
- Bachelor of Business Administration in Business and Sustainability
- ● Bachelor of Commerce in Entrepreneurial Management



SCHOOL OF COMMUNICATION & CULTURE

Finding the right way to communicate is just as important as what you're communicating. The school is built on the belief that every communication professional must be able to foster high-quality human connections and leverage a wide range of communication channels and processes to achieve human, social and organizational transformation.

- Graduates from the MA in Intercultural and International Communication program will gain the skills necessary to communicate effectively and engage different audiences across multiple settings. Course themes include organizational communication and culture, public culture, intercultural competence, global policies and international relations.
- Students in the MA in Professional Communication program will participate in a Live Case Challenge to analyze

organizational communication challenges and present recommendations and a communications plan.

- The BA in Professional Communication program is ideal for students who want to pursue a career in public relations, social media management, business communication, public advocacy, crisis communication, advertising, journalism or multimedia production, to name a few.
- Research in Action: Dr. Phillip Vannini, professor and Canada Research Chair in Innovative Learning and Public Ethnography, studies subjects such as off-grid living and how to make ethnographic research as captivating and accessible as popular culture.

PROGRAMS

- ● Master of Arts in Intercultural and International Communication
- Master of Arts in Professional Communication
- Graduate Certificate in Strategic Global Communication
- Graduate Certificate in Professional Communication Management
- ● Bachelor of Arts in Professional Communication



SCHOOL OF ENVIRONMENT & SUSTAINABILITY

Today's business and community leaders, citizens and policy makers must be educated and inspired to take up the mantle of sustainability to transform tomorrow's business and government policy. Environment and sustainability programs at Royal Roads University provide you with a community action focus anchored by real-world science. Learn to understand the environmental, social, cultural, political and economic elements of environmental health, and identify effective strategies to overcome the challenges of moving to a sustainable society.

- BA/BSc in Environmental Practice and MA/MSc in Environmental Practice programs have been developed in partnership with ECO Canada. The curriculum aligns with established environmental career paths and fulfills the academic requirements for Environmental Professional (EP) certification consistent with National Occupational Standards. Upon graduation, students will be eligible for certification as an Environmental Professional in-training (EPt).
- The BSc in Environmental Science, accredited by ECO Canada, features a major nine-month industry project completed for public or private enterprise, enabling students to apply and build their skills in the real world.
- The BSc in Environmental Science and the BSc in Environmental Management programs teach industry-standard lab and field methods in a team-based environment.

- The MA in Environmental Education and Communication program cultivates awareness and insight as to how we live, work, teach and learn, how we relate to and communicate with each other, and how we might act to inspire change through education and communication. It is offered in blended format and includes three on-campus residencies.
- The MA/MSc in Environment and Management program consists of ten courses (seven on campus and three distance online through Internet technologies) and completion of a graduate thesis.

PROGRAMS

- Master of Arts in Environmental Education and Communication
- Master of Arts/Master of Science in Environment and Management
- ▲ Master of Arts/Master of Science in Environmental Practice
- Graduate Diploma in Environmental Education and Communication
- Graduate Certificate in Environmental Education and Communication
- Graduate Certificate in Sustainable Community Development
- Bachelor of Science in Environmental Management
- ▲ Bachelor of Arts/Bachelor of Science in Environmental Practice
- Bachelor of Science in Environmental Science



SCHOOL OF EDUCATION & TECHNOLOGY

Through the School of Education and Technology, you will find effective and relevant knowledge and skills to bring to your educational setting and immediately apply to your real-world environment. Discover practical tools and strategies to address issues, resolve challenges, and discover opportunities within your learning environment. Use your new skills to create and sustain an inclusive climate and culture that supports student achievement and your professional growth.

- MA in Higher Education Administration and Leadership will allow you to customize your learning by choosing from a specialization in Business Development in International Education or in Systems Leadership in Higher Education.
- The MA in Learning and Technology program is recognized by the Institute of Performance and Learning. Graduates receive credit towards the work experience requirements of the Certified Training and Development Professional certification.
- International Baccalaureate Organization (IBO) Certificates are available to students in the MA in Educational Leadership and Management and the MA in Learning and Technology programs. Students may be eligible for the IBO Certificate in Leadership Practice and the IBO Advanced Certificate in Leadership Research.
- Research in Action: Dr. George Veletsianos is a Canada Research Chair in Innovative Learning and Technology and associate professor. He studies emerging technologies and his research aims to understand learners', educators' and scholars' practices and experiences in emerging online settings (social networks and open learning environments).

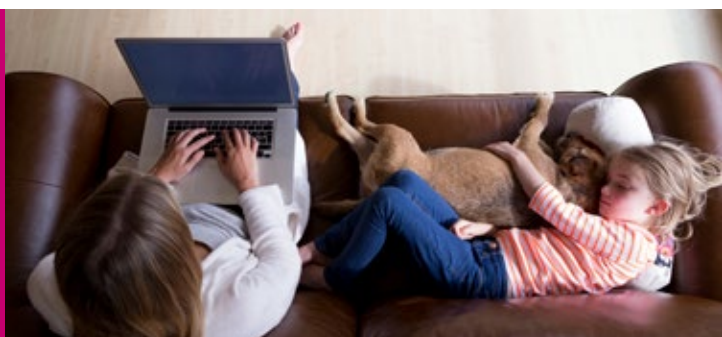
PROGRAMS

- Master of Arts in Educational Leadership and Management
- Master of Arts in Higher Education Administration and Leadership
- ▲ Master of Arts in Learning and Technology
- Graduate Diploma in Educational Leadership and Management
- Graduate Diploma in Higher Education Administration and Leadership
- ▲ Graduate Diploma in Learning and Technology
- ▲ Graduate Diploma in Technology-Enhanced Learning and Design
- ▲ Graduate Certificate in Business Development in International Education
- ▲ Graduate Certificate in Instructional Design
- ▲ Graduate Certificate in Systems Leadership in Higher Education

SCHOOL OF HUMANITARIAN STUDIES

When work is purposeful, lives can change. The School of Humanitarian Studies is where leaders and thinkers develop the skills and expertise to create positive change toward a more just society. Whether you aspire to transcend group conflict, champion collaborative solutions-focused justice or provide humanitarian assistance in times of dire need, you'll find your path at Royal Roads University.

- Programs are taught by scholar-practitioners and industry experts, enabling students to develop the capacity to assist others and make a difference, both locally and globally. Our interdisciplinary approach gives students a balance of theory and experiential learning, to apply their knowledge in a real-world setting.
- Students in the master's programs can choose between the internship, thesis or course-based options, allowing them to choose the pathway to program completion that best fits their career aspirations.



COLLEGE OF INTERDISCIPLINARY STUDIES

The world is a complex place, which means there are many ways for us all to discover our place within it. That's why the College of Interdisciplinary Studies (CIS) features a more personalized and customized approach.

- The Doctor of Social Sciences is the first degree of its kind in North America – specifically, the credential itself and way in which it combines a transdisciplinary approach, applied research and blended format.
- The Graduate Certificate in Sustainable Community Development is jointly delivered with School of Environment and Sustainability. In partnership with a local municipality, the program provides opportunities for students to engage directly in real, socially relevant projects and community challenges.

- Graduates of our programs come away with the inspiration and tools (critical thinking, communication, research, knowledge, and professional skills and practice) to develop solutions to some of the world's most complex problems.
- Upon completion of the BA in Justice Studies, students can apply directly to the Master of Laws (LLM) program at the University of London.

PROGRAMS

- Master of Arts in Conflict Analysis and Management
- Master of Arts in Disaster and Emergency Management
- Master of Arts in Justice Studies (pending approval)
- Master of Arts in Human Security and Peacebuilding
- Graduate Diploma in Conflict Analysis and Management
- Graduate Diploma in Disaster and Emergency Management
- Graduate Diploma in Human Security and Peacebuilding
- Graduate Diploma in Justice Studies
- ● Bachelor of Justice Studies



- BA in Interdisciplinary Studies includes a professionally focused capstone year that consists of an independent study, internship and final research paper or project. Students are eligible to participate in Vancouver Island University's international field schools (in the Liberal Studies department) – typically a 9-credit interdisciplinary study of European culture abroad.
- The MA in Interdisciplinary Studies students have three program pathway options: course-based, major project or thesis.

PROGRAMS

- Doctor of Social Sciences
- Master of Arts in Interdisciplinary Studies
- ▲ ■ Graduate Diploma in Interdisciplinary Studies
- ▲ Graduate Certificate in Interdisciplinary Studies
- Bachelor of Arts in Interdisciplinary Studies



SCHOOL OF LEADERSHIP STUDIES

It's no surprise our School of Leadership Studies leads the way a little differently. We don't believe in a hierarchical style of leading but in the power of the team.

- Our Graduate Certificate in Values-Based Leadership is one of a kind in Canada, highlighting deeper patterns that are influential and typically invisible in everyday organizational life.
- The MA in Leadership is one of the flagship programs of RRU. Students focus on relevant, real world problem-solving projects grounded in a rigorous theoretical understanding of the nature of today's organizations and the changing role of leadership within them.
- The MA in Global Leadership includes the option to complete an independent study field trip or to join a group of students on an 11-day international cultural leadership field trip. In 2016 and 2017, students traveled to Ecuador to complete their credits for this course.
- The MA in Global Leadership is for those who work or desire to work in community based organizations, government organizations, international NGOs, international government organizations, indigenous organizations, international training or institutions of higher education, the business sector or other types of organizations that have a globally oriented social purpose or peace keeping mission.

PROGRAMS

- Master of Arts in Global Leadership
- Master of Arts in Leadership
- Master of Arts in Leadership - Health Specialization
- Graduate Diploma in Global Leadership
- Graduate Certificate in Global Leadership
- Graduate Certificate in Leadership
- Graduate Certificate in Values-Based Leadership



SCHOOL OF TOURISM & HOSPITALITY MANAGEMENT

Our tourism and hospitality management programs are designed to prepare students to thrive in an international environment. Students with wanderlust will find numerous opportunities for adventures abroad including internships, field schools and student exchange. Students who take either undergraduate program will be required to complete an internship opportunity to apply their studies, demonstrate their abilities and launch their careers. 80% of students continue employment with their internship host employer.

- The Graduate Certificate empowers students to customize the education experience: students choose from online and on-campus courses to develop marketing, strategy and leadership skills with options to ladder into the master's program.
- Students in the MA in Tourism Management program will take part in a 10-day international field study to visit an established global tourism destination with their fellow students and instructors.
- Research in Action: associate professor and director Geoffrey Bird's research includes heritage tourism, community development, poverty alleviation and sustainable tourism. His recent documentary series, "War Memories Across Canada", looks at war not from the perspective of battlefields overseas but from the places in Canada that were shaped by war.

PROGRAMS

- ● Master of Arts in Tourism Management
- ▲ ■ ● Graduate Certificate in Tourism Management
- Bachelor of Arts in Global Tourism Management
- Bachelor of Arts in International Hotel Management



PROFESSIONAL & CONTINUING STUDIES

For current and future leaders looking to refine their skill set or make a greater impact in their careers, Royal Roads University offers a suite of graduate certificates as part of our Executive Education programs.

- The six-month programs are offered online, usually with 1-2 short on-site intensives.
- RRU's graduate certificates have ties to professional organizations, such as the International Coach Federation (ICF) and the Project Management Institute (PMI).
- Graduate certificates provide an opportunity to both specialize and enhance previous graduate-level education, or to delve into a subject area and ladder into select RRU master's programs in the future.
- Graduate certificates appeal to those considering master's-level programs but looking for a shorter time commitment (and lower cost!). And graduate certificates can earn students credit towards an eventual master's-level degree.
- Relevant, innovative content of the programs is designed to be applied within the workplace for an immediate return on the education investment.
- Students in RRU's graduate certificates are able to advance their specialization into career opportunities, where focused knowledge is a recognized asset.

These programs are also portable in the sense that they could be delivered in another country with a partner institution. Contact us for more information!

EXECUTIVE EDUCATION PROGRAMS

- Graduate Certificate in Executive Coaching
- Graduate Certificate in Advanced Coaching Practices
- Graduate Certificate in Project Management
- Graduate Certificate in Change Management
- Graduate Certificate in Organization Design and Development
- Graduate Certificate in Strategic Human Resources Management
- ▲ Graduate Certificate in Workplace Innovation
- Graduate Certificate in Corporate Social Innovation

CUSTOM & CONTRACT TRAINING

RRU values the opportunity to design custom training programs to suit the needs of international clients. Modeling best practices in learning and teaching, our highly professional instructors are active in their fields of study and noted for their breadth of experience. They also possess a deep understanding of instructional techniques, facilitation skills and feedback processes, and are familiar teaching to participants of varying language and cultural backgrounds.

Training programs can be developed and provided in a modular format which can be delivered onsite at RRU or at the location of the client's choice. Courses and programs can be designed to range in length from one day, two weeks, or longer, with costs and content to be negotiated based on participant needs and anticipated outcomes. Working directly with institutions, partners and agencies, Royal Roads University delivers unique and meaningful education experiences for a variety of international groups. Our team works closely with each partner to define the program goals, objectives and outcomes in order to fully customize each proposal to meet the needs of the partner. With this approach, we have established a strong reputation for our custom design and delivery of short-term training programs in a variety of disciplines that attract 900+ international participants per year.

SAMPLE PROGRAMS

- Leadership and Innovation Development
- Teaching Methodologies and Teacher Training
- Tourism and Hospitality Management
- English for Special Purposes
- Professional and Intercultural Communication
- Environmental Education
- Business and Management
- Doing Business in Canada

SUMMER ENGLISH EXPERIENCE PROGRAMS

Our summer programs allow students to gain international experience and cross-cultural skills while improving their written and spoken English.

- Learning takes place on the grounds of the historic Hatley Castle and in one of the most popular tourist regions in Canada.
- Students are also offered various regional tours as part of the program.
- Students will have the opportunity to select an elective to enhance their experience. Elective courses could be in the areas of leadership, tourism, or communication.
- The programs focus on Canadian workplace culture, networking and career planning.
- Smaller class size ensures maximum student participation.

SAMPLE PROGRAMS

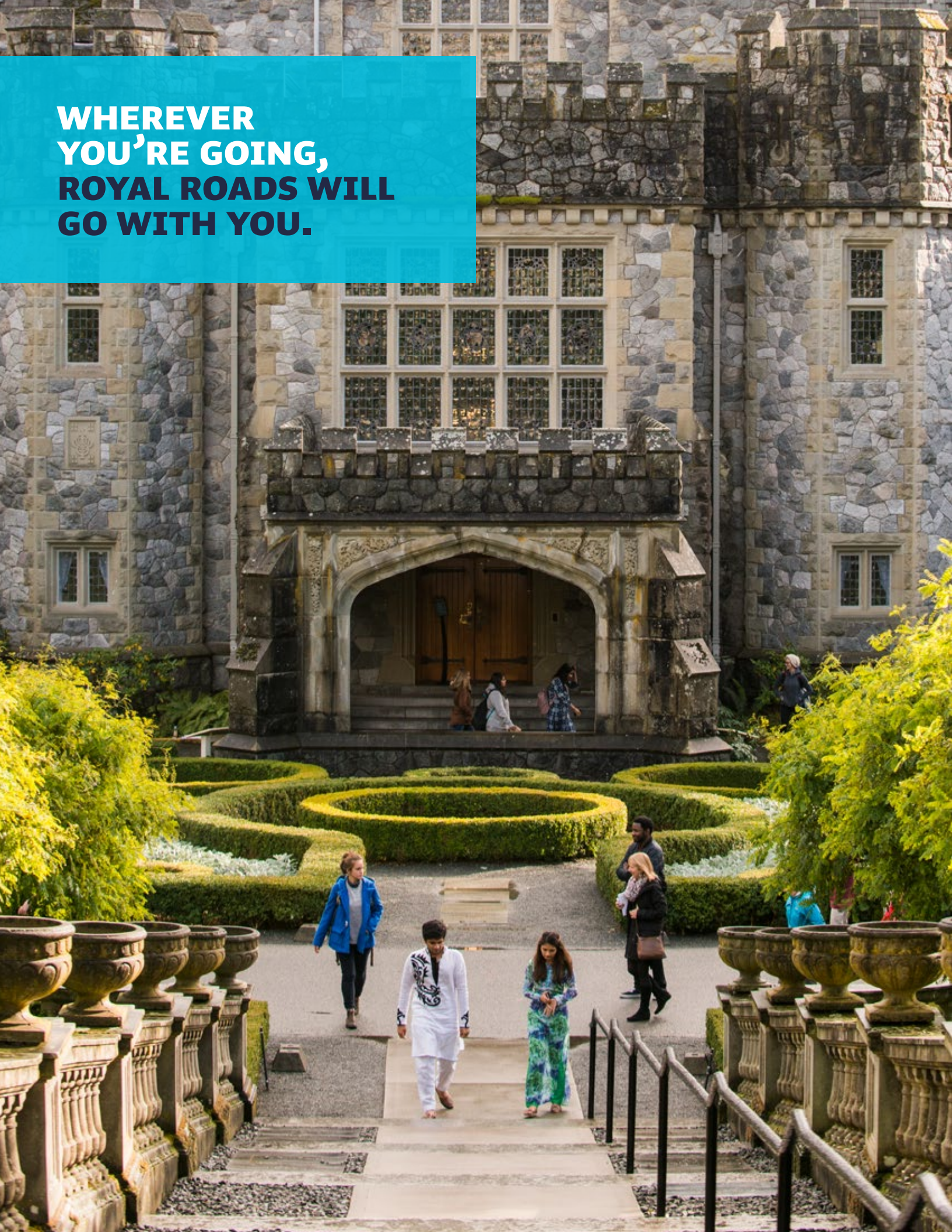
- Summer English Experience
- Winter English Program
- Canadian Campus and Industry Experience
- Youth Leadership Camps
- One Semester Programs
- Customized programs

INTERNATIONAL COLLABORATIVE PARTNERSHIPS

Active International University Partners

| | Country | Activity |
|---|----------------|--|
| FH Salzburg University of Applied Sciences | Austria | Student Exchange |
| MCI Management Centre Innsbruck | Austria | Dual Degree |
| IMC Fachhochschule Krems University of Applied Sciences | Austria | Student Exchange |
| Artevelde University College Ghent | Belgium | Student Exchange |
| Universidade Do Estado Da Bahia Brazil | Brazil | MOU |
| Fundacion Instituto Profesional Duoc UC | Chile | Student Exchange |
| Universidad De Los Andes | Chile | Student Exchange |
| Universidad de Los Lagos | Chile | Student Exchange |
| Applied Technology College of Soochow University | China | Block Transfer |
| City University of Macau | China | Block Transfer |
| Beifang Education Group | China | Contract Training |
| Southwest University of Science and Technology | China | Contract Training |
| Jinhua Polytechnic | China | Diploma in Hospitality and Hotel Management |
| Pearl River Training Center (PRTC) | China | Graduate Certificate in Project Management |
| Guilin University of Technology | China | International Programs |
| Shandong Normal University | China | International Residency |
| Zhejiang Gongshang University | China | International Residency |
| Maple Leaf Educational Systems | China | MA Educational Leadership & Management |
| Tianjin University of Technology | China | MA Environmental Management |
| Yunnan Normal University Business School | China | MA in Interdisciplinary Studies Field School |
| Sanda University | China | MOU |
| Beijing Concord College of Sino-Canada | China | Undergraduate Pathways |
| ESPE Universidad de las Fuerzas Armadas | Ecuador | International Programs |
| ESPOCH (Escuela Superior Politecnica del Chimborazo) | Ecuador | International Programs |
| Grenoble Graduate School of Business | France | MBA Residency |
| Berlin School of Economics and Law | Germany | Student Exchange |
| Munich University of Applied Sciences | Germany | Student Exchange |
| Steinbeis Business Academy | Germany | Student Exchange |
| FH Trier University of Applied Sciences - Birkenfeld | Germany | Visiting Student Program |
| Jai Hind College | India | Block Transfer |
| KES Shroff College | India | Block Transfer |
| Krupanidhi Group of Institutes | India | Block Transfer |
| Munnar Catering College | India | Block Transfer |
| Thakur Educational Group | India | Block Transfer |
| Vidyalankar School of Information Technology | India | Block Transfer |
| School of Inspired Leadership | India | GC Executive Coaching |
| Chandigarh University | India | Student Exchange |
| International University of Languages and Media | Italy | Student Exchange |
| Kanagawa University | Japan | Student Exchange |
| Seinan Gakuin University | Japan | Student Exchange |
| Shujitsu University | Japan | Visiting Student Program |
| Universidad Tecmileno | Mexico | Field Schools |
| Universidad Panamericana | Mexico | International Programs |
| ITESO, Universidad Jesuita de Guadalajara | Mexico | Student & Faculty Exchange |
| Avans University of Applied Sciences | Netherlands | International Programs |
| Western Norway University of Applied Sciences | Norway | Student Exchange |
| Scottish Qualifications Authority | Scotland | Block Transfer |
| Dong-Eui University | South Korea | Contract Training |
| Kangnam University | South Korea | Contract Training |
| Sookmyung Women's University | South Korea | Student Exchange |
| Kookmin University | South Korea | Student Exchange & Summer Programs |
| KyungHee University | South Korea | Student Exchange & Visiting Student Program |
| University of Seoul | South Korea | Student Exchange & Visiting Student Program |
| Universitat Pompeu Fabra Barcelona | Spain | Student Exchange |
| Lund University | Sweden | Student Exchange |
| Geneva Business School | Switzerland | Student Exchange & Block Transfer |
| University of Derby (Buxton Campus) | United Kingdom | Student Exchange |
| Fielding University | USA | Articulation Agreement |
| MESA Chair Academy Maricopa Country Community College District | USA | Articulation Agreement |
| San Mateo County Community College District | USA | Block Transfer |
| National Economics University | Vietnam | Student Exchange |

**WHEREVER
YOU'RE GOING,
ROYAL ROADS WILL
GO WITH YOU.**





Royal Roads
UNIVERSITY

Royal Roads University
2005 Sooke Road
Victoria, British Columbia
V9B 5Y2 Canada

1.250.391.2600 x 2514
international@royalroads.ca
royalroads.ca

